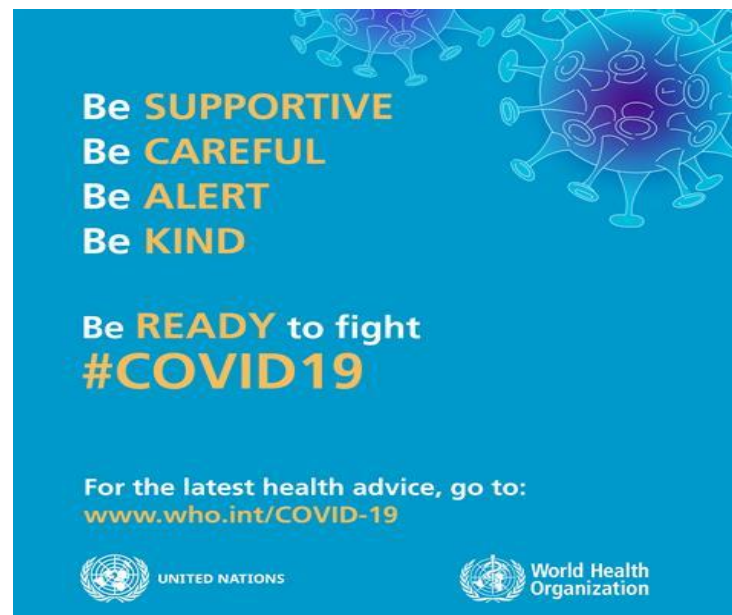




STANFORD CONSERVATION

NEWSLETTER MARCH 2020

CORONA VIRUS AFFECTS US ALL



NEWS UPDATES

- The first visible step in the implementation of the Stanford Revitalisation Plan has begun!
- The post boxes are to be moved to the area behind the library to open the vista across the village green to the Grade 2 listed Anglican Church.
- Soon thereafter the wall between the municipal offices and the existing tourism bureau will be demolished to form the first 'Village Piazza' or open space.
- Stanford Conservation and the Heritage Committee have been driving this initiative for the past 8 years and we are excited to see the first fruits of many years of negotiations with the municipality. A big thank you to area manager Kat Myburgh, as well as our ward councilor and the mayor, Dudley Coetzee, for their tireless efforts towards making this happen.
- The tarring of Bezuidenhout Street at the Community Centre is currently underway, is another realisation of the Revitalisation Plan, the aim of which is to not only improve the appearance of the village, but also to link various parts of the community.

- The SCT AGM (originally planned for 23 April) will be postponed due to the coronavirus pandemic. Information in this regard will be emailed to all members.
- Think & Drink has been postponed until further notice.



STANFORD REVITALISATION PLAN

A brainchild of Stanford Conservation and a collaboration between Stanford's Conservation, Tourism & Business and Ratepayer Associations, the aim of this plan is to improve various areas that are of heritage, environmental and socio-economic significance to the community. It was drawn up in 2014 by members of the community for the community, accepted in principle by the Overstrand Municipality, and included in the municipal IDP process as from 2016. The latter is extremely important as it allows for municipal funds to be allocated to the project, as well as for sourcing external funding for the various aspects of the Revitalisation plan.

There are four areas of focus:

1. The Queen Victoria Street precinct
2. The Village Green precinct
3. The open space / river corridor
4. The Community Centre precinct.



QUEEN VICTORIA STREET PRECINCT

The concept is to create a user-friendly main road that pays tribute to the importance of foot traffic rather than parked cars. By opening up enclosed spaces, literally 'breaking down fences' and creating piazzas that could be used after hours and on weekends for social gatherings, the intention is create a vibrant tourism environment that will improve business (and therefore socio-economic development) in the village and includes the transformation of the entrance to Stanford (which is at present taking place as part of the R43 upgrade).

[Click here for more information on the look and feel of this plan](#)

VILLAGE GREEN PRECINCT

This is one of the few remaining undeveloped 'market squares' in South Africa and is therefore of significant heritage grading. In order to make the Queen Victoria Street precinct feasible, additional parking space needs to be created in a manner that will complement the heritage status of the village yet provide for developmental needs.



To this end the two existing roads that are part of the village green need to be paved or cobbled in order to retain the undeveloped character yet provide for the (dust-free) needs of the residents abutting the village green. Various options have been proposed, which will be taken into consideration by the municipality as funds become available for the upgrading of the village green.

[Click here for more information on this plan](#)

THE OPEN SPACE / RIVER CORRIDOR

The Mill Stream (the overflow of water from the natural spring that is Stanford's main water source, and which is supplemented by additional groundwater) is of extreme socio-economic importance. Although a natural phenomenon, it is regarded by a large section of the community as a legacy of the apartheid era.

The intention is to improve the area by improving the water quality in the stream (and the existing dammed area), by removing all invasive vegetation and by opening the banks so that they can be used as a recreational area.

[Click here for a more detailed description.](#)

COMMUNITY CENTRE PRECINCT

The plan is to develop this area into an inter-cultural small business/tourism and sport hub. The road in this precinct is the bloodline between various parts of Stanford's community and the entire area (road included) needs to be upgraded to provide socio-economic opportunities for the entire community. On the one side of the road are a completely under-utilised Community Hall and a beautiful picnic area that needs to become more community-friendly and linked to the river corridor. On the other side of the road are numerous sports facilities.

The intention is to link the sport fields and the community hall (thus improving the utilisation of both facilities) and to build additional structures that will facilitate sustainable small business development, instill community pride and result in collaboration between diverse parts of Stanford's community.

WANDELPAD





We have paid Ernest Sitsha upfront for the full lockdown period. He is our most valuable asset and we wish him and his family health and safety over this difficult period.

The team, comprising 7 volunteers and Ernest, has been busy in and around the village as usual doing maintenance and clearing these last couple of months, despite the tremendous heat over the Christmas period. There are some notable improvements making the walk easier and more enjoyable and spotting the Bontebok with new additions to add interest! The clearance of reeds around the swimming area at the top end of the Wandelpad with the path to this area having been made safer and more accessible and the Vlei Street section of the path mowed and cleared.

New signs will be erected shortly to replace the existing sun-damaged ones.

[Click here to view the full sign on our website.](#)

STANFORD WANDELPAD

<p>Cape Clawless Otter (<i>Aonyx capensis</i>) (Kaapse Otter)</p> <p>The Cape Clawless Otter occurs widely throughout Southern Africa. It can be found in most wetland types including streambeds with permanent pools, and may even be found along coastal habitats. Otters mostly feed on crabs, frogs, small mammals, birds, insects, as well as molluscs (mussels, snails).</p> <p>Although otters are mostly crepuscular (most active during twilight), signs of activity can be noted throughout the day. When swimming, only the head is usually seen above water, and the coat has a black sheen when wet.</p> <p>When on dry land, the Cape Clawless Otter is a dark chocolate brown colour with white extending from the upper chest region to the lower lip, and walks with an arched back.</p> <p>Otters usually burrow in dense vegetation and make use of self-excavated dens (known as "holts"), and use a central area for their droppings (known as a "middens").</p>  <p style="font-size: small; text-align: center;">Photograph: Thomas F. Peckham</p>	<p>Pied Kingfisher (<i>Ceryle rudis</i>) (Bontvisvanger)</p> <p>The Pied Kingfisher is said to be one of the most numerous kingfishers in the world, but is locally nomadic in response to fluctuating habitat conditions and food supply.</p> <p>The Pied Kingfisher occurs in pairs or family groups in most kinds of water-bodies containing fish, including marine margins. These kingfishers hover-hunt more than any of the kingfishers and feed predominantly on fish, but also eat crabs and aquatic or terrestrial invertebrates.</p> <p>It is the only black-and-white kingfisher found in South Africa and the male is recognised by its double-breasted band, while the female has a single, incomplete breast band. They have a rattling twitter and a sharp, high-pitched chick-chick call.</p> <p>Other kingfishers to be found along the "wandelpad" include the Brownhooded Kingfisher (Bruinkopvisvanger), the Malachite Kingfisher (Kuifkopvisvanger) and the Giant Kingfisher (Reuse Visvanger).</p>  <p style="font-size: small; text-align: center;">Photograph: Dr. Ivan Oberholzer</p>  <p style="font-size: small; text-align: center;">Photograph: Jonathan Bester</p>  <p style="font-size: small; text-align: center;">Photograph: Jonathan Bester</p>
--	---

SCORE

With all activities halted until further notice at our beloved Swop Shop, now would be a good time to thank everybody involved in this project in one or other way, be it on the volunteer side or the donation side.

A heartfelt **THANK YOU** to every individual who has contributed to add to our never-ending need for clothing in all shapes and sizes as well as household items no longer needed. For the kind villagers who have added toys and trinkets (some brand new), who sent us washed and neatly



MARCH 2020

folded clothing, we salute you! This of course leads on to a great big **THANK YOU** to the ladies at the Info Centre, for accepting load upon load of goodies delivered by the villagers for SCORE.

Another huge **THANK YOU** goes to the people who have relentlessly been donating pet food – it is such a delight to see the eagerness with which the little ones queue up to ‘buy’ a packet of food for their animal friends.

Now could also be a good time for some further spring (or I guess autumn) clearing whilst everybody has extra time on their hands. Please keep Swop Shop in mind and put all your unwanted clothing and household goodies aside for us to collect as soon as the virus emigrates to another planet.

We will also be launching an exciting new **DIGNITY FOR GIRLS** project with the aim to enable our school-going girls to attend school all days of every month. This will be an opportunity for villagers to get involved in sponsoring a girl with the necessary items, which will entail non-disposable/washable, locally made produce. For further information kindly contact Elma Hunter (082-892-9507) who will be driving this project.

We are also very much dependent on financial donations for our stationery and toiletry sections at Swop Shop. We used almost all our available funds this week to purchase much needed soap for some of our patrons. It was gladly handed out at the clinic by Sister Benita (see photos.) Depending on how this virus will behave in the weeks to come, we might be appealing to all of you for donations so that we can buy more soap. As none of us are sure exactly what lies ahead, please keep an eye on social media for more information regarding the soap project.

Finally, to all the volunteers so willingly being involved in all aspects of SCORE, without you none of what we have achieved and envisage to achieve further down the line would be possible. Thank you just doesn't cut it.

If anybody in the village has a calling to get involved with what we do, please contact us for more information. We are but a phone call away! Contact Elma Hunter (number above) or Linda Strydom (083-844-3707).



Sister Benita



Soaps handed out

MEMBERSHIP

We encourage Stanfordsians to join Stanford Conservation. Membership fees are only R200 per year, per individual or family. The Trust is a Non-Profit Organisation (NPO) run entirely by unpaid volunteers. We raise funds through outside grants, donations and membership fees, as well as specific fundraisers like 'Think & Drink'. These funds are used to support the various SCT environmental, architectural and social initiatives.

For more information, please visit our website on www.stanfordconservationtrust.org.za